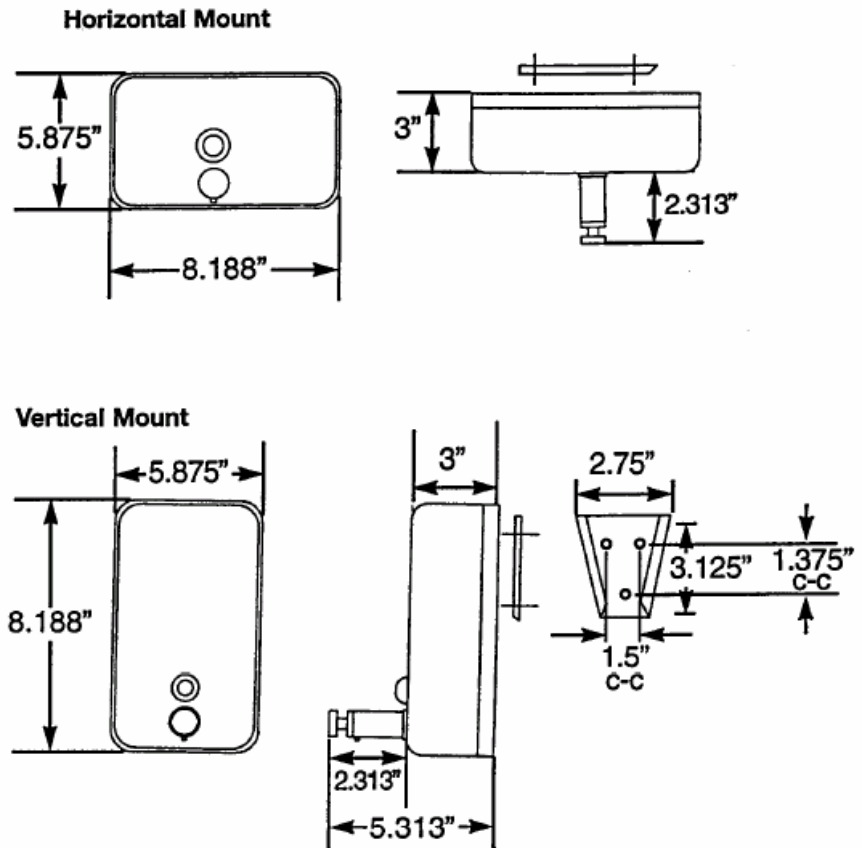


### Stock Numbers:

- q 122SS – Liquid Soap Dispenser  
Satin Finish, Retail Packaging  
Vertical Mount  
View level indicator  
Keyed Fill Cup  
40 oz. Capacity

### Dimensions:



### Materials:

Liquid Soap Dispenser is fabricated of 20-gauge type 304 stainless steel with a satin finish. Valve is brass with a triple plated polished chrome finish. View level indicator is clear plastic.

### Installation Instructions:

Mount wall plate on wall surface with • " steel screws. Unlock and remove filter cap. Back off machine screw which goes through back panel of unit. Slip dispenser over wall plate and tighten machine screw until secure.

Note: Wood blocking is preferable behind all wall surfaces. If wood blocking is not available, the following optional fasteners may be used: Tile / Masonry – Plastic or Lead Anchors; Plaster / Drywall – Toggle Bolts.

Stock Number: \_\_\_\_\_ Liquid Soap Dispenser  
By Creative Specialties



25300 AL MOEN DRIVE • NORTH OLMS TED, OH 44070  
CORPORATE HEADQUARTERS: (800) 321-8809 • FAX: (800) 848-6636  
INTERNATIONAL: (440) 962-2000 • FAX: (440) 962-2726  
CUSTOMER SERVICE (USA): 800-882-0116 • FAX: (888) 379-2720  
WWW.CSI.MOEN.COM

©Copyright Creative Specialties International 2006