

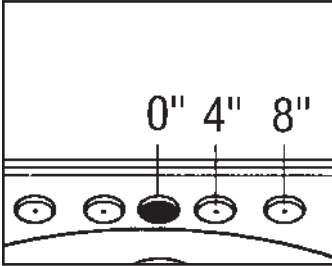
Vanity Tops & Bowls

Installation Care and Cleaning

READ ALL INSTRUCTIONS BEFORE BEGINNING

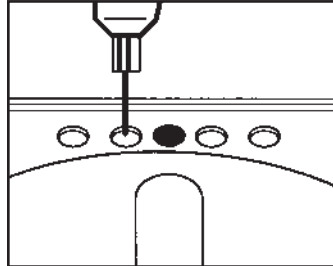
Trial Fit – If required, it may be necessary to trim vanity top with a saber saw. Install trimmed side where an exposed side edge is not needed. If unit does not seat properly, adjust supports or notch dry wall.

NOTE: Trimming only one side of the vanity top may result in the bowl being slightly offset.



1. Faucet Holes

Your Swanstone vanity top and bowl comes with the center hole drilled. Standard hole patterns are designed for 4" or 8" faucets on the underside.

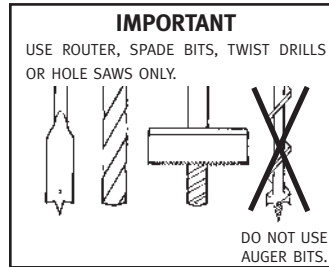


2. Drilling

Locate the desired drill points and with a 1/4" bit, drill a pilot hole from the underside. Drill fixture holes from the top side with a 1 1/4" router, spade bit, twist drill or hole saw. Faucets may be installed at this time.

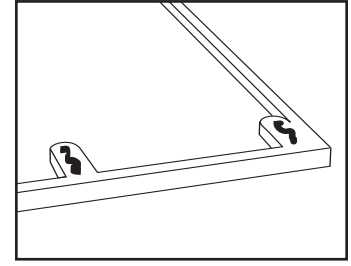
TOOLS REQUIRED

- DRILL
- 1 1/4" ROUTER, SPADE BIT, TWIST DRILL OR HOLE SAW (CARBIDE TIPPED)
- SILICONE OR NEOPRENE BASED PANEL ADHESIVE
- CAULKING GUN



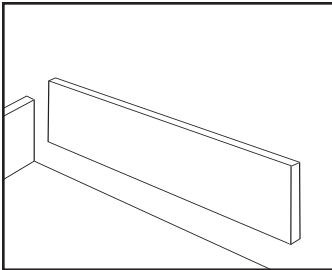
CAUTION

Do not use an auger bit.



3. Applying Adhesive

Apply dabs of silicone or Neoprene based panel adhesive (not included) onto all glue pads. Place Swanstone vanity top onto support.



4. Optional Side Splash Panels

Trial Fit Side Splash. To allow for the installation of the side splash so that it is flush with the front edge of the vanity top, it will be necessary to trim off approximately 1/2" from the side splash. Install the trimmed edge against the vanity top back splash.

Clean side splash panel and vanity top with a mild household abrasive cleaner prior to installation. Making sure the surface is clean and dry, apply a thin bead

of silicone or Neoprene based adhesive (not included) along the bottom of the side splash panel and to vanity top. Wipe off excess adhesive with mineral spirits or denatured alcohol. Use proper color silicone sealant (not included) to caulk joint between top and side splash panel. Caulk all exposed seams to provide an adequate moisture barrier. It is not recommended that side splash panels be attached to the wall.

Faucets, supply lines, and drain fittings should be installed according to manufacturers instructions.

Swanstone's Recommended Cleaning Procedure For Swanstone Solid Surface Vanity Tops and Bowls

Hard To Remove Stains

1. Abrasive cleaners such as Ajax, Comet, Bon Ami or Bar Keeper's Friend.
2. The use of an abrasive pad such as "Scotch-Brite."
3. For the most stubborn stains, fill the Swanstone vanity bowl about one-quarter full with a 50/50 solution of bleach and water. After ten or fifteen minutes of soaking, drain solution from the bowl as you wash and rinse both sides and bottom.

NOTE: DO NOT USE STEEL WOOL OR METAL SCOURING PADS

Mineral Based Stains

Cleaners designed to remove iron or rust should not harm Swanstone.

Marks Or Discoloration

WHITE automotive rubbing compound may be used to remove stubborn marks or discoloration.

Scratches

Use sandpaper starting with 150 grit. Use 220 grit next then finish with 320-grit sandpaper. Blend the area with an abrasive-finishing pad.

NOTE: FOR SWANSTONE GRANITES, Use #9 Fine Finishing Film for Final blending. Use Paste Wax to Restore Color.

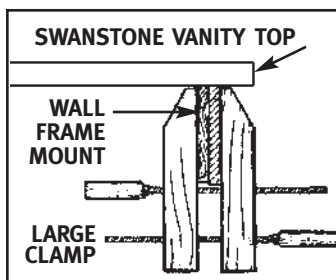
Use of these products will not damage the Swanstone solid surface. Always follow label directions. If these methods fail to produce acceptable results, contact the Swanstone representative in your area.

Vanity Tops & Bowls

Installation Care and Cleaning

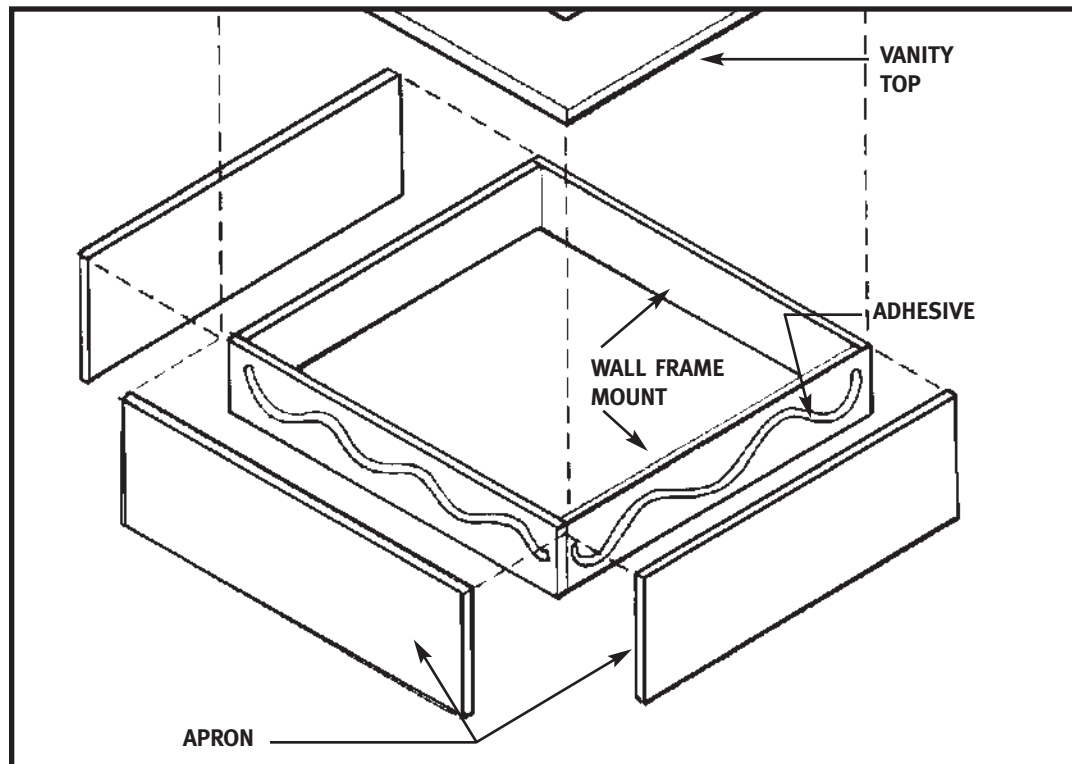
APRON PANEL INSTALLATION

If the Swanstone top installation calls for an apron panel application, construct a wall frame mount from 3/4" plywood cut to accommodate the height of the apron panel to be installed. Attach one, two, or three apron panels as desired with panel adhesive (not included). To insure adhesion of apron panel to wall frame mount, clamp apron panel(s) to wall frame mount for approximately 24 hours.



NOTE

If cutting of the apron panel is required, use a high-speed carbide tipped saw blade. Cut only from the facing side of the panel; then sand smooth.



Swanstone's Recommended Cleaning Procedure For Swanstone Solid Surface Vanity Tops and Bowls

Hard To Remove Stains

1. Abrasive cleaners such as Ajax, Comet, Bon Ami or Bar Keeper's Friend.
2. The use of an abrasive pad such as "Scotch-Brite."
3. For the most stubborn stains, fill the Swanstone vanity bowl about one-quarter full with a 50/50 solution of bleach and water. After ten or fifteen minutes of soaking, drain solution from the bowl as you wash and rinse both sides and bottom.

NOTE: DO NOT USE STEEL WOOL OR METAL SCOURING PADS

Mineral Based Stains

Cleaners designed to remove iron or rust should not harm Swanstone.

Marks Or Discoloration

WHITE automotive rubbing compound may be used to remove stubborn marks or discoloration.

Scratches

Use sandpaper starting with 150 grit. Use 220 grit next then finish with 320-grit sandpaper. Blend the area with an abrasive-finishing pad.

NOTE: FOR SWANSTONE GRANITES, Use #9 Fine Finishing Film for Final blending. Use Paste Wax to Restore Color.

Use of these products will not damage the Swanstone solid surface. Always follow label directions. If these methods fail to produce acceptable results, contact the Swanstone representative in your area.

LIMITED **Lifetime**
WARRANTY